

CXA-0496 (DOUBLE OUTPUTS WITH DIMMING FUNCTION)

Applicable LCD:

AA104VD01

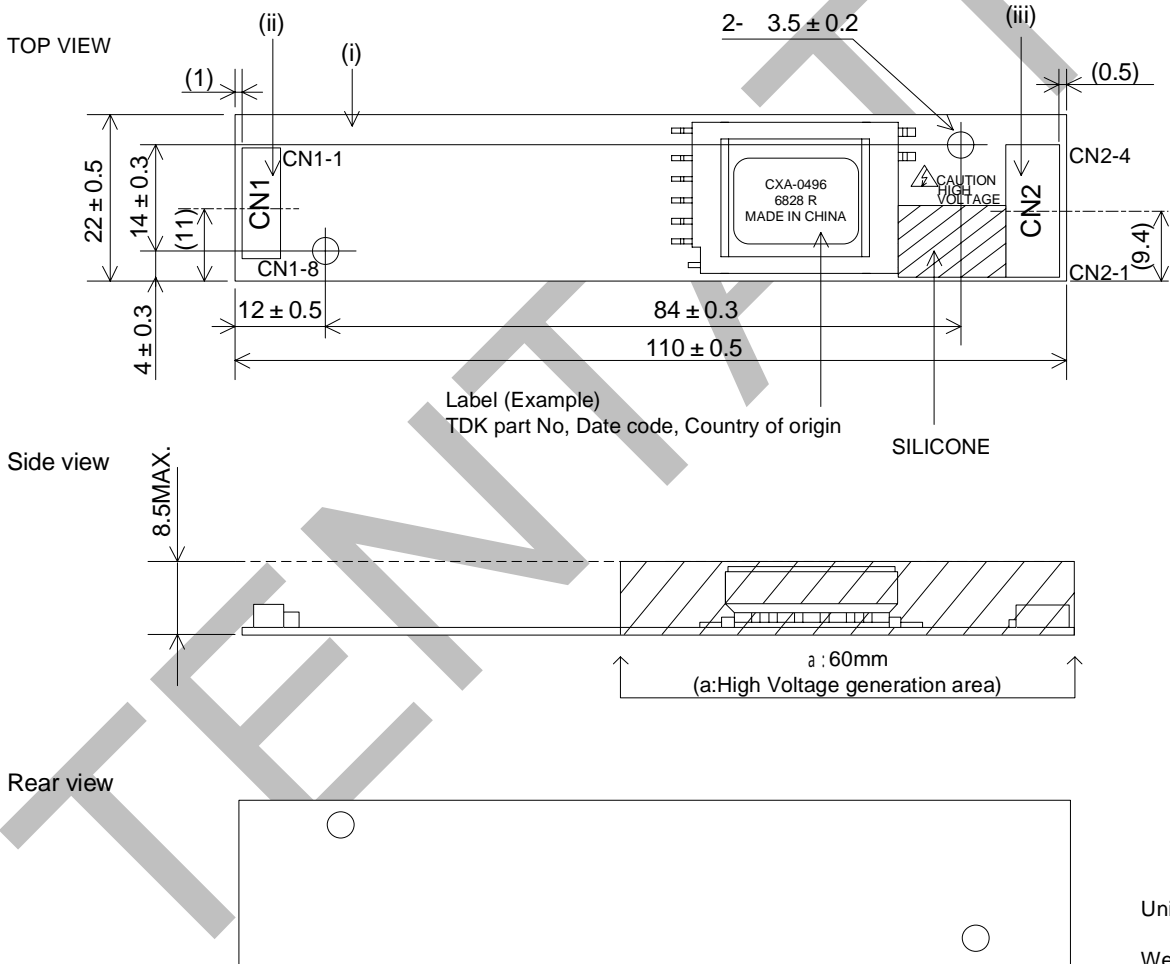
FEATURES :

- This inverter is for Two lamps
- Alarm signal function
- Shut down function
- PWM dimming
- Silicone Coating in High Voltage area

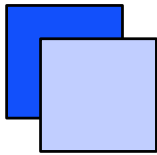
TEMPERATURE & HUMIDITY :

Operating Temperature Range (-30 ~ +80) Centigrade
 Storage Temperature Range (-30 ~ +85) Centigrade
 Humidity 95 %RH max (No dew)

[1] DIMENSIONS :



No.	Part Description	Material	QU	REMARK
(i)	PCB	Composite (CEM-3)	1	UL94V-0 t=1.0
(ii)	Input Connector CN1	53261-0871	1	(MOLEX)
(iii)	Output Connector CN2	SM03(7-D1)B-BHS-1-TB(LF)(SN)	1	JST



CXA-0496 (DOUBLE OUTPUTS WITH DIMMING FUNCTION)

[2] Connector Configuration:

Input side CN1

Pin No.	Symbol	Rating	Notes
CN1-1	Vin	10.8~13.2V	Input Voltage
CN1-2			
CN1-3	GND	0V	GND
CN1-4			
CN1-5	Vrmt	0V/2.5V~Vin	0~0.4V:OFF 2.5~Vin V:ON
CN1-6	Rbr1/Vbr	0~2.5V /0~50k	VR1/Control
CN1-7	Rbr2/Vbr2	GND/0 ~ 50k	GND/VR2
CN1-8	Vst (Output)	0V/5V	The warning output 5V in abnormal circumstances

Output side CN2

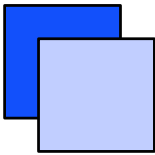
Pin No.	Symbol	Rating	Notes
CN2-1	VHIGH1	(TBD)Vrms	Output 1
CN2-2	VHIGH2	(TBD)Vrms	Output 2
CN2-3	N.C.		N.C.
CN2-4	VLOW	(2V)	Output 1,2Return

[3] ELECTRICAL CHARACTERISTICS:

Item	Symbol	Conditions					Specifications			Unit
		Vin(V)	Vrmt(V)	Rbr(kW)/ Vbr(V)	Ta(°C)	RL1(kW)//CL1(pF) RL2(kW)//CL2(pF)	MIN.	TYP.	MAX.	
Output Current (Brightness max.)	Io1/2	12±1.2	5±0.25	0 / 0V	-30 ~ 80	TBD TBD	5.3	6.0	6.7	mArms
Output Current (Brightness min.)	Io1/2	12±1.2	5±0.25	50k / 2.5V	-30 ~ 80	TBD TBD	(3.5)	(4.2)	(4.9)	
Input Current 1	Iin1	12±1.2	5±0.25	0 / 0V	-30 ~ 80	TBD TBD	-	(0.6)	(TBD)	A DC
Input Current 2	Iin2	12±1.2	0	0 / 0V	-30 ~ 80	TBD TBD	-	0	1	mA
Input Current3 *3-1	Iin3	12±1.2	5±0.25	0 / 0V	-30 ~ 80		-	10	30	mA
Frequency	F1	12±1.2	5±0.25	0 / 0V	-30 ~ 80	TBD TBD	45	50	55	kHz
Frequency (Duty)	F2	12±1.2	5±0.25	50k / 2.5V	-30 ~ 80	TBD TBD	(230)	(255)	(280)	Hz
Open Circuit Voltage	Vopen	12±1.2	5±0.25	0 / 0V	-30 ~ 80		(1400)	(TBD)	-	Vrms
Warning Signal *3-2	Vst	12±1.2	5±0.25	0 / 0V	-30 ~ 80	TBD	4.5	5.1	5.5	V
		12±1.2	5±0.25	0 / 0V	-30 ~ 80	TBD	4.5	5.1	5.5	
		12±1.2	5±0.25	0 / 0V	-30 ~ 80	TBD TBD	-	0	0.5	

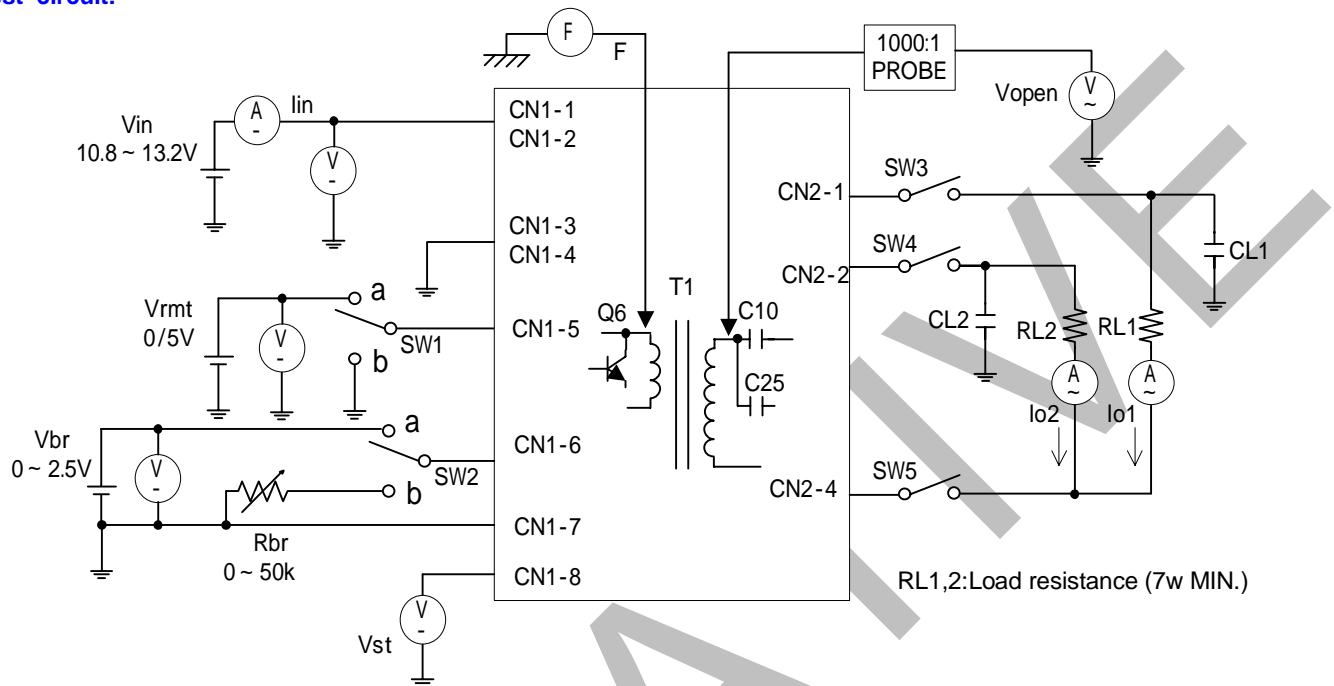
*3-1. When the inverter detects open circuit all of the lamps for more than 3 seconds it will shut down.

*3-2. In test circuit, when any switches (sw3, 4 and 5) open, the warning signal will be activated (+5V).



CXA-0496 (DOUBLE OUTPUTS WITH DIMMING FUNCTION)

[4] Test circuit:



Note4-1. SW1(ON/OFF) Operation is as following;

SW1	Operation of unit
a	Operation
b	Non operation

Note4-2. SW2(ON/OFF) Operation is as following;

SW2	Operation of unit
a	Voltage dimming Vbr=0~2.5V
b	Variable resistance dimming VR=0~50k

Note4-3. SW3 ~ 5(ON/OFF) Operation is as following;

SW3 ~ 5	Operation of unit
Open	Operation (5V out put)
Close	Non operation(0V out put)

Note4-4. Test Equipments

- (V) Digital Multiple Meter(ADVANTEST R6452A or equivalent)
- (A) DC Current Meter(ADVANTEST R6452A or equivalent)
- (F) Frequency Countor(ADVANTEST R6452A or equivalent)
- (V) True RMS Meter(NF Circuit M2170r or equivalent)
- (A) High Frequency Current Meter(FLUKE187or equivalent)
- (1000:1) High Voltage Probe(Tektronix P6015A or equivalent)